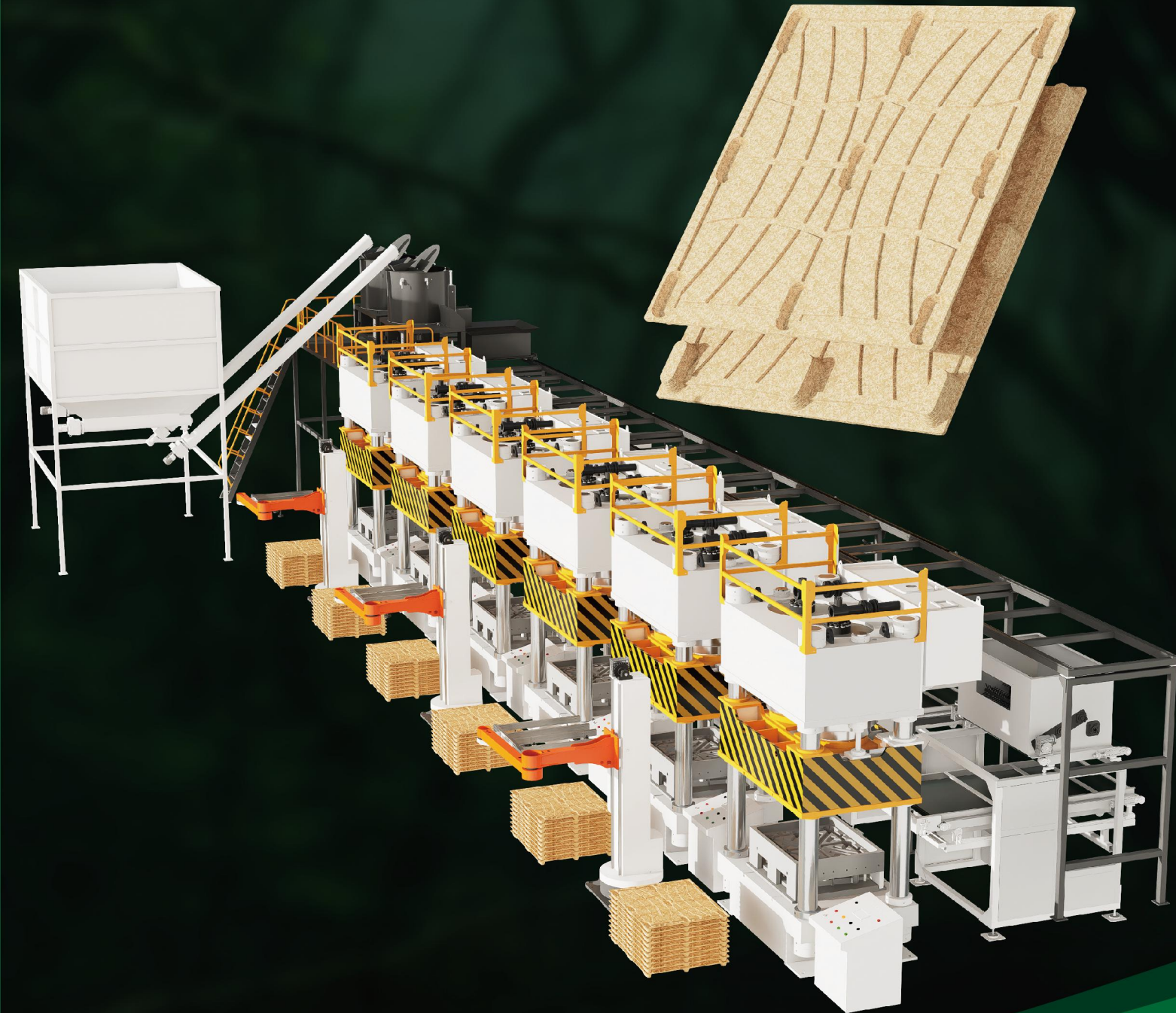


智压千钧 托举绿色发展

INTELLIGENT PRESSURE TO PROMOTE GREEN DEVELOPMENT



Overall solution for tray production

托盘生产整体解决方案

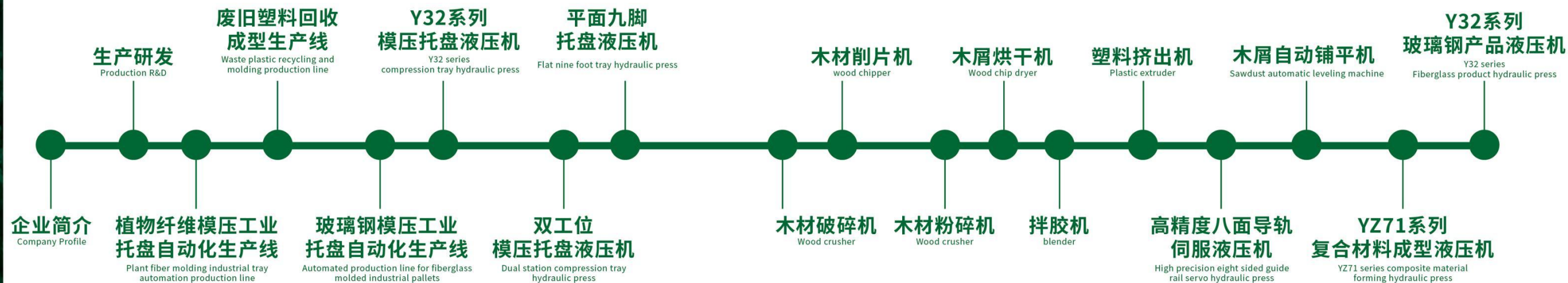
工厂服务 | 寄料试机 | 定制方案 | 厂家供货 | 贴心服务

地址:河南滑县先进制造业开发区中科智能装备产业园
(中科路与东环路交叉口西北100米)
电话:+86 0372-5575666
传真:+86 0372-5575688
网址:<http://www.zhongkedy.com>



官方公众号

目录 CATALOG



河南中科智能装备集团专注于装备制造领域，拥有一个以国家高新技术为导向，集研发、制造、销售和服务于一体的全产业链装备制造产业园区。园区坐落于河南省滑县先进制造业开发区中科路与东环路交叉口西100米路北，总投资6.5亿元，占地面积320亩，总建筑面积约20万平方米。建设有标准化厂房、办公楼、宿舍楼、仓库等完善的配套设施，致力于推动装备制造产业的创新与发展。

中科液压机由河南中科智能装备集团倾力打造，拥有一个集研发、制造、销售和服务于一体的专业化团队。自成立以来，和哈工大、郑州大学、河南工业大学、河南农业大学、安阳工学院等多家高等院校开展产学研合作，致力于各类创新装备的研发制造与推广应用。

设计与研发

DESIGN AND DEVELOPMENT

中科液压机，主要生产龙门剪切机、双工位模压机、金属压块机、Y32四柱液压机、单动薄板拉伸液压机、拉伸液压机、冷挤压液压机、四柱万能液压机、模压托盘机、HY61型金属挤压机、Y27单动薄板冲液压机、HY49自行车三向挤压液压机、内高压成型液压机、多向模锻自动化成形液压机、复合材料自动模压生产线以及复合材料成型液压机等。

我司复合材料液压机系列包含BMC/DMC自动模压生产线、GMT自动模压生产线、LFT-D自动模压生产线、SMC自动模压生产线、碳纤维成型液压机HP-RTM复合材料成型液压机、SMC复合材料成型液压机、PCM复合材料成型液压机。



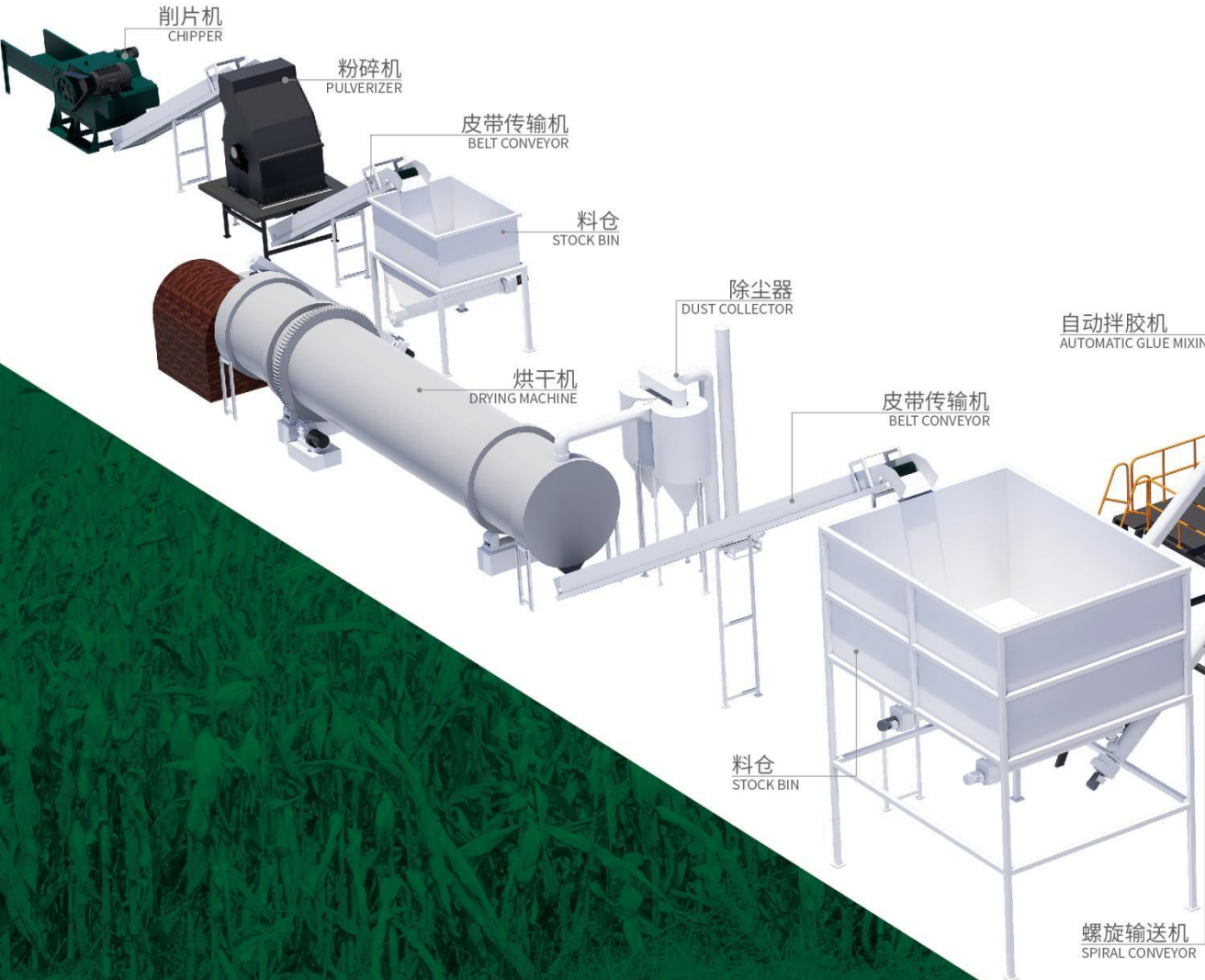
生产现场

PRODUCTION SITE



植物纤维模压工业托盘自动化生产线

PLANT FIBER MOLDING INDUSTRIAL TRAY AUTOMATION PRODUCTION LINE



植物纤维模压工业托盘简称模压托盘，是使用刨花木屑、植物秸秆等原材料，采用高温高压成型工艺生产而成的新型环保托盘，面板和九个支脚一次模压成型，主要应用于码头、货场、仓库、车间、商场等地的货物搬运和储存。

整条生产线包括木材削片机、木屑粉碎机、木屑烘干机、拌胶机、自动铺平机、模压托盘液压机（包含模具）、自动取料机械手以及物料输送设备，同时配备自动化控制系统，能够实现自动化生产，大幅提高公司产能，节省人工成本。

Plant fiber molded industrial pallets, abbreviated as molded pallets, are a new type of environmentally friendly pallets produced using high-temperature and high-pressure molding technology from raw materials such as wood shavings and plant straw. The panels and nine support legs are molded in one go, mainly used for cargo handling and storage in docks, freight yards, warehouses, workshops, shopping malls, and other places. The entire production line includes a wood chipper, a wood chip crusher, a wood chip dryer, a glue mixer, an automatic leveling machine, a molded tray hydraulic press (including molds), an automatic material retrieval robot, and material conveying equipment. It is also equipped with an automation control system, which can achieve automated production, significantly improve the company's production capacity, and save labor costs.

生产线优势

PRODUCTION LINE ADVANTAGES

- ◆ 原材料比较广泛，如废木材、枯树枝、木屑、刨花、木片、棉花杆、农作物秸秆等材料，成本比较低；
- ◆ 可以根据客户需求生产多种规格尺寸的模压托盘；
- ◆ 可以实现自动给料、自动拌胶、自动送料、自动铺平、自动压制、自动取料等自动化操作；
- ◆ 生产线可以灵活配置，根据客户实际情况可只进行自动拌胶、自动上料、自动铺平、自动压制等部分工艺流程。

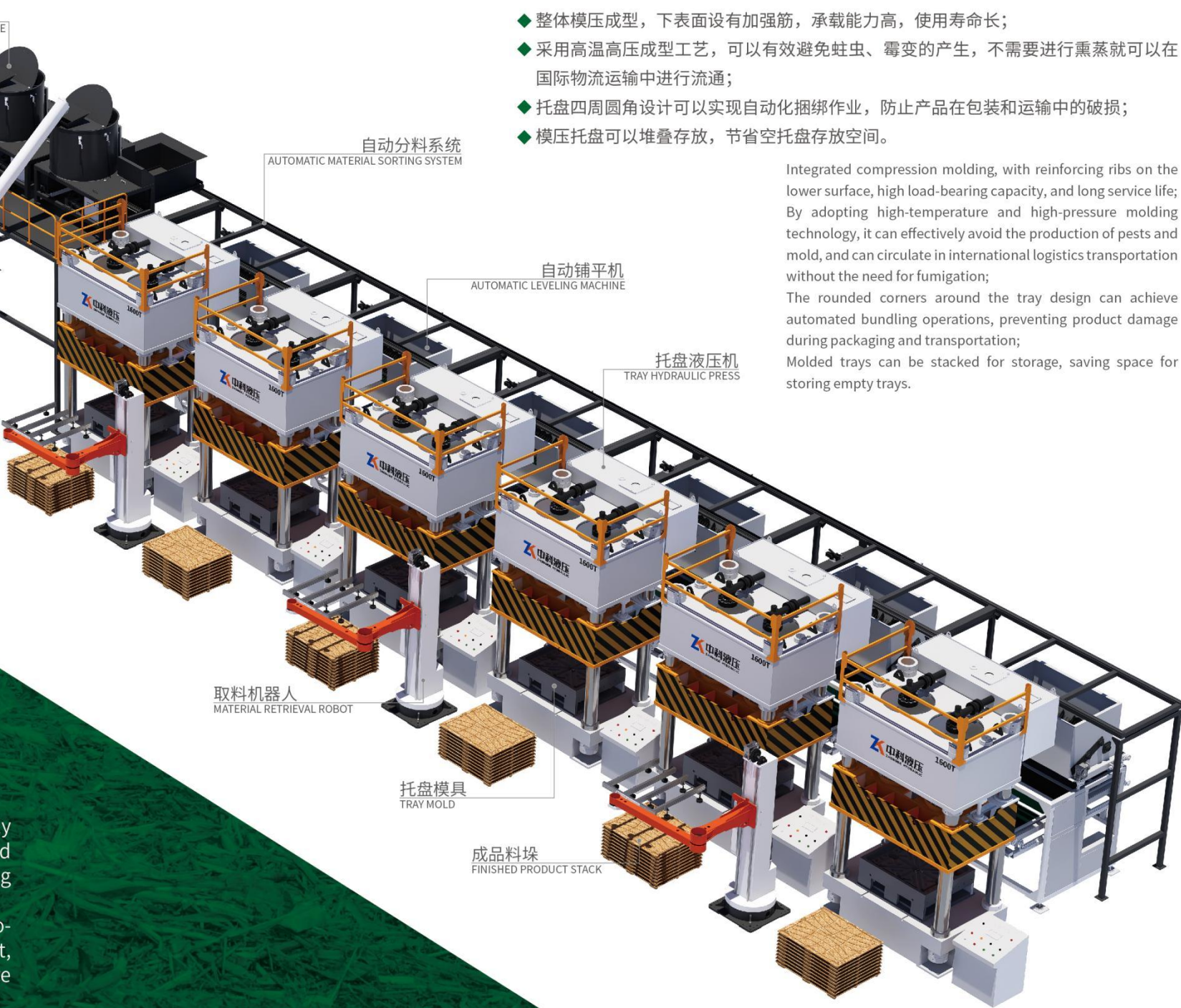
The raw materials are quite extensive, such as waste wood, dead branches, sawdust, shavings, wood chips, cotton stalks, etc., with relatively low costs; Can produce molded pallets of various specifications and sizes according to customer needs; It can achieve automated operations such as automatic feeding, automatic mixing, automatic feeding, automatic leveling, automatic pressing, and automatic material retrieval; The production line can be flexibly configured, and according to the actual situation of the customer, it can only perform some process flows such as automatic mixing, automatic feeding, automatic leveling, and automatic pressing.

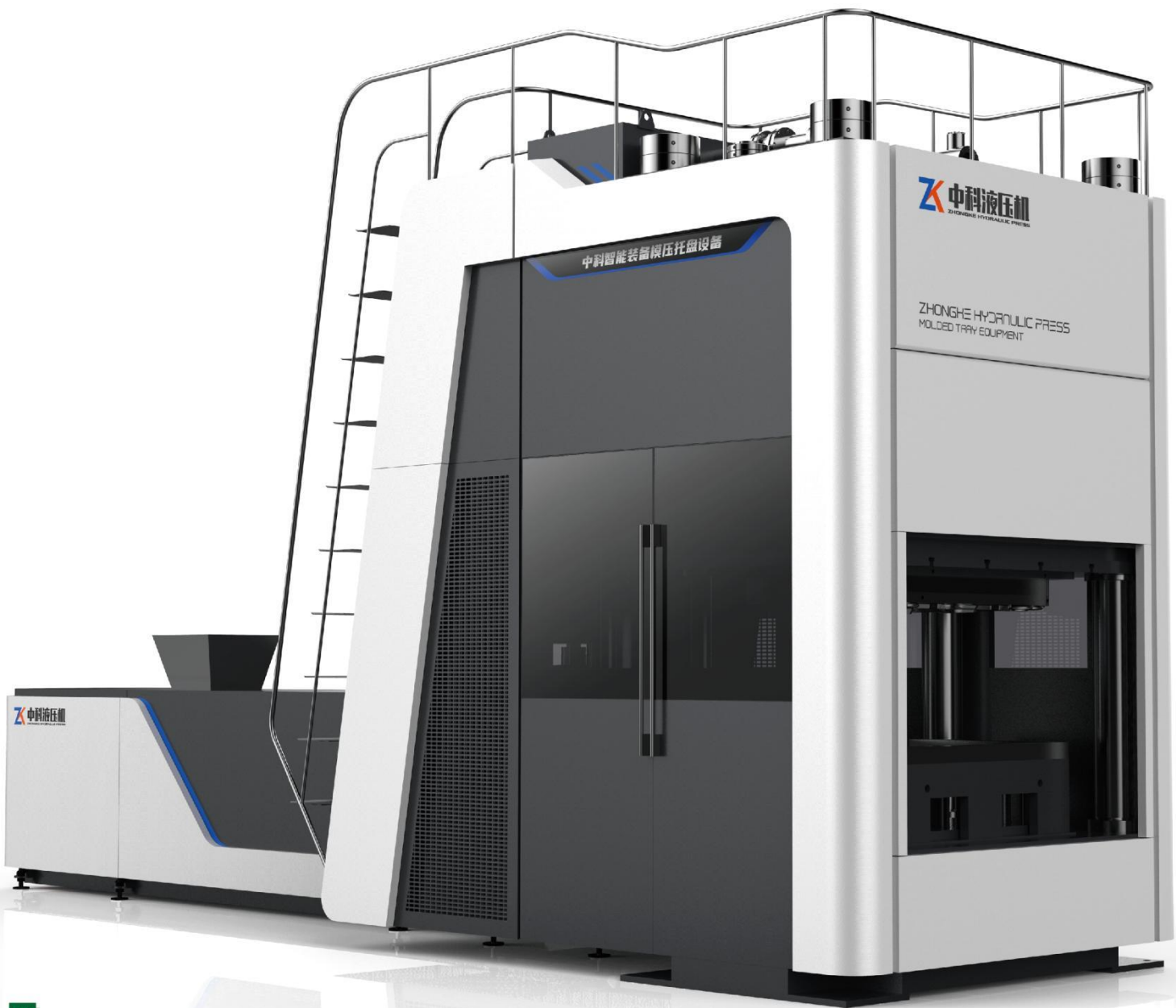
生产线成品优点

ADVANTAGES OF FINISHED PRODUCTS ON THE PRODUCTION LINE

- ◆ 整体模压成型，下表面设有加强筋，承载能力高，使用寿命长；
- ◆ 采用高温高压成型工艺，可以有效避免蛀虫、霉变的产生，不需要进行熏蒸就可以在国际物流运输中进行流通；
- ◆ 托盘四周圆角设计可以实现自动化捆绑作业，防止产品在包装和运输中的破损；
- ◆ 模压托盘可以堆叠存放，节省空托盘存放空间。

Integrated compression molding, with reinforcing ribs on the lower surface, high load-bearing capacity, and long service life; By adopting high-temperature and high-pressure molding technology, it can effectively avoid the production of pests and mold, and can circulate in international logistics transportation without the need for fumigation; The rounded corners around the tray design can achieve automated bundling operations, preventing product damage during packaging and transportation; Molded trays can be stacked for storage, saving space for storing empty trays.





随着塑料制品消费量不断增大，废弃塑料也不断增多，废旧塑料回收成型也逐渐成为热门行业。该生产线可以利用多种废旧塑料、复合材料等原材料生产多种塑料制品，无需造粒或使用新材料，大大降低了产品的生产成本，生产过程节能环保，能为公司创造更大的效益。

整条生产线包括输送进料装置、熔化挤塑机、定量进料装置、塑料成型液压设备、模具、自动取料机械手，同时配备自动化控制系统，能够实现自动化生产，大幅提高公司产能，节省人工成本。

With the increasing consumption of plastic products, the amount of waste plastic is also increasing, and the recycling and molding of waste plastic has gradually become a popular industry. This production line can use various waste plastics, composite materials and other raw materials to produce a variety of plastic products, without the need for granulation or the use of new materials, greatly reducing the production cost of products. The production process is energy-saving and environmentally friendly, which can create greater benefits for the company. The entire production line includes a conveying feeding device, a melting extruder, a quantitative feeding device, plastic forming hydraulic equipment, molds, an automatic material taking robot arm, and is equipped with an automation control system, which can achieve automated production, greatly improve the company's production capacity, and save labor costs.

生产线优势
PRODUCTION LINE ADVANTAGES

- ◆ 原材料使用各种废旧塑料或复合材料，成本比较低；
- ◆ 可以根据客户需求生产多种塑料制品，如塑料托盘、塑料井盖等；
- ◆ 可以实现自动化生产，除需要人工上料外，其他均可自动化完成；
- ◆ 节能环保，生产过程中不会产生废水废料，减少环境污染。

Using various waste plastics or composite materials as raw materials, with relatively low costs; We can produce various plastic products according to customer needs, such as plastic pallets, plastic manhole covers, etc; It can achieve automated production, which can be completed automatically except for manual feeding; Energy saving and environmental protection, no wastewater or waste is generated during the production process, reducing environmental pollution.

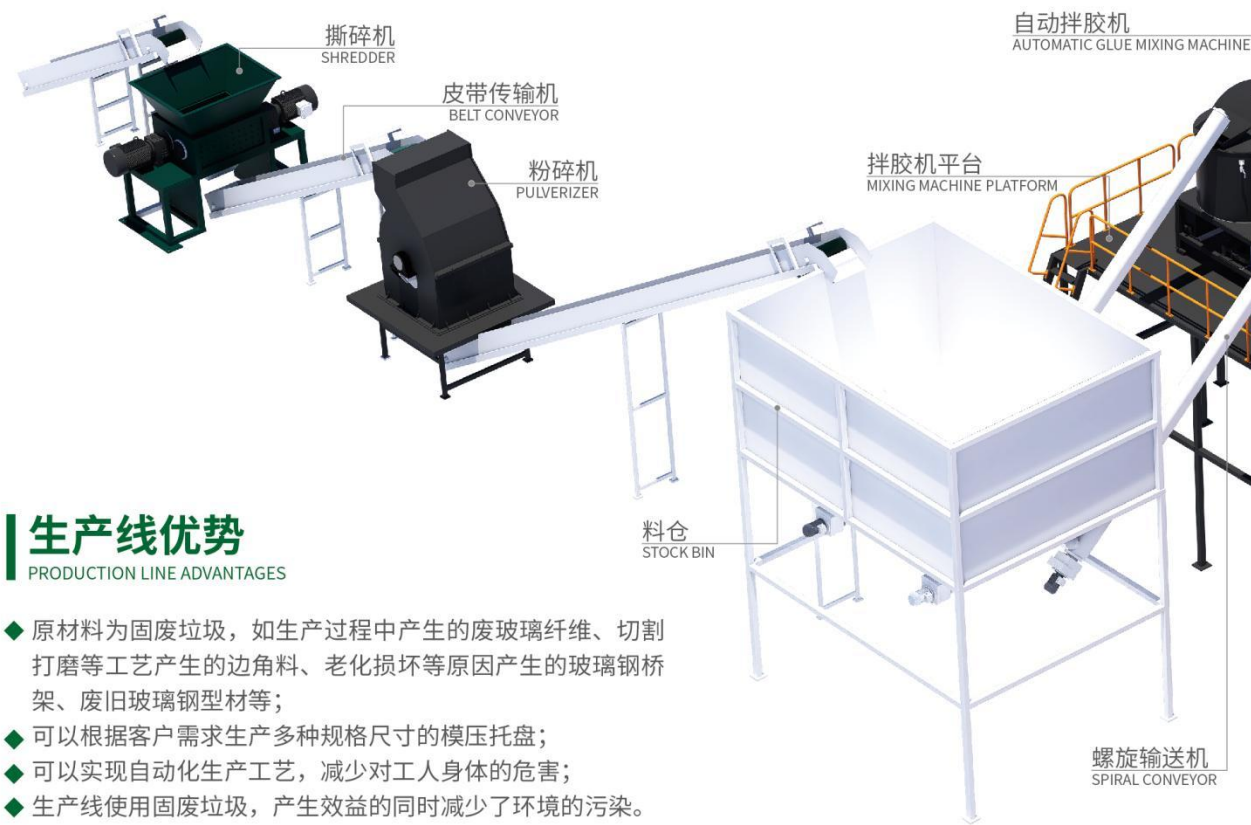
生产线成品优点
ADVANTAGES OF FINISHED PRODUCTS ON THE PRODUCTION LINE

- ◆ 塑料托盘广泛应用于仓储物流行业；
- ◆ 原材料使用废旧塑料，生产成本低；
- ◆ 优化的模具设计，承载性能高；
- ◆ 整体热压成型，使用寿命长。

Plastic pallets are widely used in the warehousing and logistics industry; Using waste plastics as raw materials, resulting in low production costs; Optimized mold design with high load-bearing performance; Integrated hot pressing molding, with a long service life.

玻璃钢模压工业托盘自动化生产线

AUTOMATED PRODUCTION LINE FOR FIBERGLASS MOLDED INDUSTRIAL PALLETS



生产线优势

PRODUCTION LINE ADVANTAGES

- ◆ 原材料为固废垃圾，如生产过程中产生的废玻璃纤维、切割打磨等工艺产生的边角料、老化损坏等原因产生的玻璃钢桥架、废旧玻璃钢型材等；
- ◆ 可以根据客户需求生产多种规格尺寸的模式托盘；
- ◆ 可以实现自动化生产工艺，减少对工人身体的危害；
- ◆ 生产线使用固废垃圾，产生效益的同时减少了环境的污染。

The raw materials are solid waste, such as waste glass fibers generated during the production process, scraps produced by cutting and polishing processes, fiberglass bridge frames and waste fiberglass profiles caused by aging and damage, etc; We can produce molded trays of various specifications and sizes according to customer needs; It can achieve automated production processes and reduce the harm to workers' health; The production line uses solid waste to generate benefits while reducing environmental pollution.

生产线成品优点

ADVANTAGES OF FINISHED PRODUCTS ON THE PRODUCTION LINE

- ◆ 具有很好的耐腐蚀性，不易受潮、霉变、腐烂等问题，使用寿命长；
- ◆ 具有较高的抗压性能，可承受较大的重量，不易发生变形、破裂等问题
- ◆ 不会产生有害气体，不易污染环境，符合环保标准，可以保障货物运输和储存的安全卫生
- ◆ 玻璃钢托盘由玻璃纤维增强塑料（FRP）制成，具有极高的强度和刚度，能够承受重物的长期堆垛而不易变形或损坏
- ◆ 生产过程几乎不产生有害物质，且可回收再利用，有效降低了对自然资源的消耗和环境污染
- ◆ 某些高性能玻璃钢托盘在短时间内可以承受较高的温度，适用于高温环境

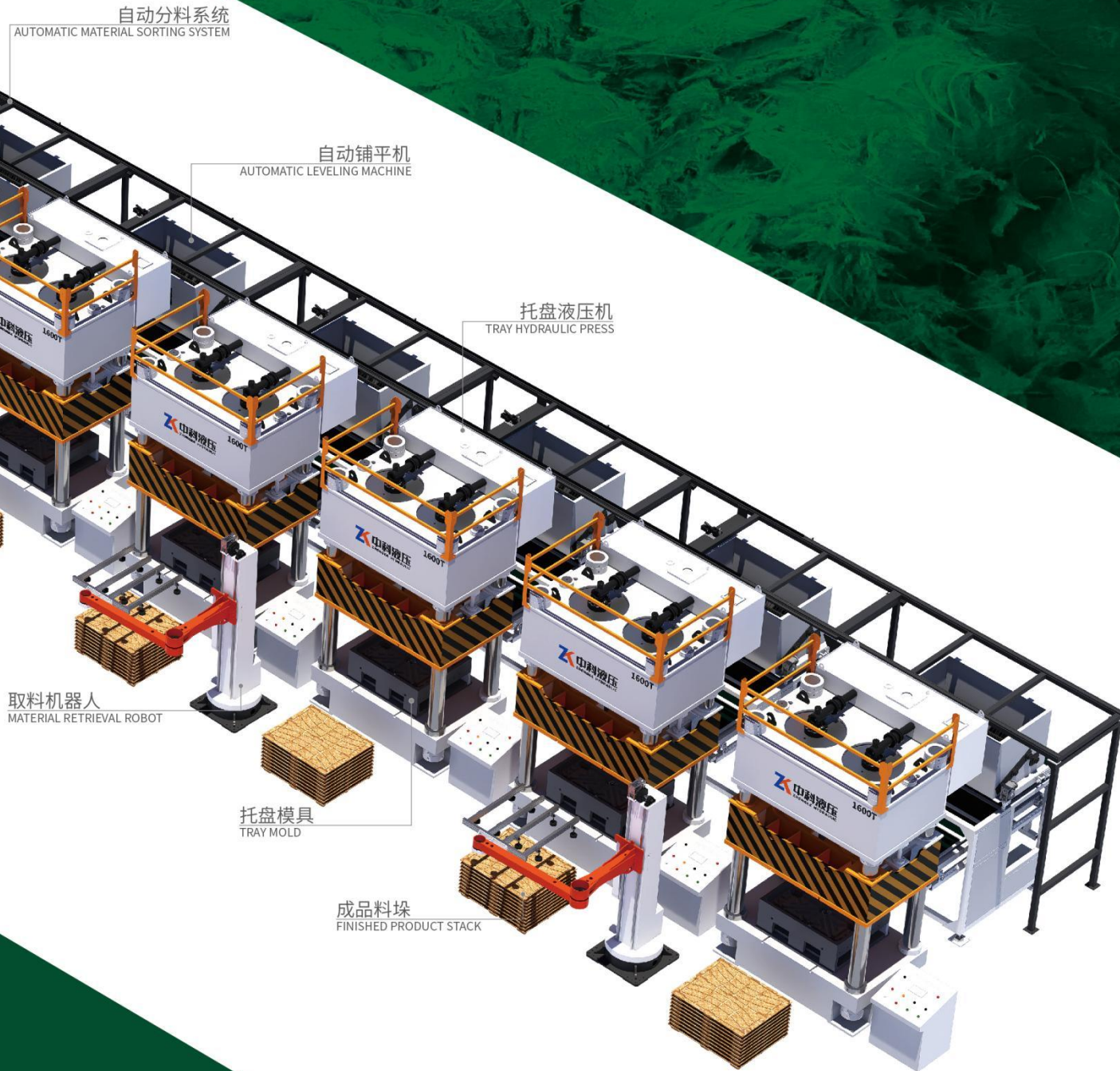
Has good corrosion resistance, is not easily affected by moisture, mold, decay and other problems, and has a long service life; Has high compressive strength, can withstand large weights, and is not prone to deformation, cracking, and other problems Will not produce harmful gases, not easily pollute the environment, meets environmental standards, and can ensure the safety and hygiene of goods transportation and storage Fiberglass trays are made of fiberglass reinforced plastic (FRP), which has extremely high strength and stiffness, and can withstand long-term stacking of heavy objects without deformation or damage The production process produces almost no harmful substances and is recyclable, effectively reducing the consumption of natural resources and environmental pollution Some high-performance fiberglass trays can withstand high temperatures in a short period of time and are suitable for high-temperature environments

玻璃钢模压托盘是采用废旧玻璃等原材料经粉碎、拌胶、模压成型的托盘制品。常用的原材料为生产过程中产生的废玻璃纤维、切割打磨等工艺产生的边角料、老化损坏等原因产生的玻璃钢桥架、废旧玻璃钢型材等，生产出托盘的同时也处理了这些固体垃圾。

整条生产线主要包括玻璃钢撕碎机、粉碎机、料仓、拌胶机、自动分料系统、自动铺平机、托盘液压机、模具、自动取料机械手以及物料输送设备，同时配备自动化控制系统，能够实现自动化生产，大幅提高公司产能，节省人工成本。

Fiberglass molded tray is a tray product made by crushing, mixing, and molding waste glass and other raw materials. The commonly used raw materials include waste glass fibers generated during the production process, scraps produced by cutting and polishing processes, fiberglass bridge frames and waste fiberglass profiles caused by aging and damage. These solid wastes are also processed while producing the trays.

The entire production line mainly includes fiberglass shredders, crushers, silos, glue mixers, automatic sorting systems, automatic leveling machines, tray hydraulic presses, molds, automatic material retrieval robotic arms, and material conveying equipment. At the same time, it is equipped with an automation control system, which can achieve automated production, greatly improve the company's production capacity, and save labor costs.



Y32系列模压托盘液压机

Y32 SERIES MOLDED TRAY HYDRAULIC PRESS

此设备主要用于模压木托盘和模压塑料托盘（更换模具即可），可用于单机操作和自动化生产线中，主要由三梁四柱、主缸、快速缸、顶出缸、液压系统和电气控制系统组成，伺服电机控制，维护方便，使用成本低。

This equipment is mainly used for molding wooden pallets and molded plastic pallets (just replace the mold), and can be used in single machine operation and automated production lines. It mainly consists of three beams and four columns, main cylinder, fast cylinder, ejector cylinder, hydraulic system, and electrical control system. It is controlled by servo motors, easy to maintain, and has low operating costs.



设备性能特点

EQUIPMENT PERFORMANCE CHARACTERISTICS

- ◆ 采用伺服控制系统
 - a. 节能25%-55%;
 - b. 噪音小于80分贝;
 - c. 温升小于25℃;
- ◆ 设备采用三梁四柱式结构，主结构采用有限元分析优化设计，简单、经济、实用；
- ◆ 液压系统采用插装阀集成系统，动作可靠，使用寿命长，液压冲击小；
- ◆ 采用独立的电气控制系统，工作可靠，维修方便；
- ◆ 设备按钮集中控制，具有调整、半自动两种操作方式；
- ◆ 可实现定程和定压两种成型工艺，并具有保压延时等功能；
- ◆ 滑块的工作压力、速度、行程范围均可根据工艺需要进行调整。

Adopting a servo control system

a. Energy saving 25% -55%;

b. Noise less than 80 decibels;

c. The temperature rise is less than 25 °C;

The equipment adopts a three beam and four column structure, and the main structure adopts finite element analysis optimization design, which is simple, economical, and practical;

The hydraulic system adopts a plug-in valve integrated system, which has reliable operation, long service life, and small hydraulic impact;

Adopting an independent electrical control system, reliable operation and convenient maintenance;

Centralized control of device buttons, with two operating modes: adjustment and semi-automatic;

It can achieve two types of forming processes: fixed stroke and fixed pressure, and has functions such as pressure holding delay;

The working pressure, speed, and stroke range of the slider can be adjusted according to process requirements.

设备应用领域

EQUIPMENT APPLICATION FIELD

设备主要应用于植物纤维模压平面工业托盘的高温高压压制成型工艺，也可以应用于粉末制品、磨料制品、复合材料、绝缘材料等非金属材料的压制成型。

设备生产出的模压托盘表面光滑平整，承载能力高，使用寿命长，经高温高压成型免熏蒸，适用于各种商品的运输。

The equipment is mainly used for the high-temperature and high-pressure compression molding process of plant fiber molded flat industrial pallets, and can also be applied to the compression molding of non-metallic materials such as powder products, abrasive products, composite materials, insulation materials, etc.

The molded pallets produced by the equipment have a smooth and flat surface, high load-bearing capacity, long service life, and are formed under high temperature and pressure without fumigation, suitable for the transportation of various commodities.

技术参数 technical parameter		型号 model	ZKY32-1250	ZKY32-1600	ZKY32-2000	ZKY32-2500
名称 name						
主缸公称力 Main cylinder nominal force		KN	12500	16000	20000	25000
回程公称力 Return nominal force		KN	400	400	500	500
顶出力 Top output force		KN	300	400	400	630
系统工作压力 System working pressure		Mpa	25	25	25	25
滑块行程 Slide stroke		mm	700	700	800	900
顶出行程 Ejection stroke		mm	200	200	250	300
最大开口高度 Maximum opening height		mm	1200	1300	1400	1600
最小开口高度 Minimum opening height		mm	500	600	600	700
滑块速度 Slider speed	快速下行 Fast downlink	mm/s	180	180	170	170
	工作 work	mm/s	6-10	6-10	6-10	5-8
	快速回程 Fast return	mm/s	180	180	160	160
工作台有效面积 Effective area of workbench	左右 about	mm	1700	1800	2100	2500
	前后 around	mm	1400	1450	1500	1700
伺服电机功率 Servo motor power		KW	55	55	65	75

双工位模压托盘液压机

DUAL STATION MOLDED TRAY HYDRAULIC PRESS

技术参数 technical parameter		型号 model	ZKY32S-1250	ZKY32S-1600	ZKY32S-2000	ZKY32S-2500
名称 name						
主缸公称力 Main cylinder nominal force		KN	12500	16000	20000	25000
回程公称力 Return nominal force		KN	400	400	500	500
下顶出力 Lower top output		KN	250*2	250*2	300*2	300*2
系统工作压力 System working pressure		Mpa	25	25	25	25
滑块行程 Slide stroke		mm	700	700	800	900
顶出行程 Ejection stroke		mm	400	400	500	500
最大开口高度 Maximum opening height		mm	1200	1200	1400	1500
最小开口高度 Minimum opening height		mm	500	500	600	600
滑块速度 Slider speed	快速下行 Fast downlink	mm/s	180	180	170	170
	工作 work	mm/s	6-10	6-10	6-10	5-8
	快速回程 Fast return	mm/s	180	180	160	160
工作台有效面积 Effective area of workbench	左右 about	mm	1800	2000	2100	2500
	前后 around	mm	1400	1500	1500	1700
工作台移动距离 Workbench movement distance		mm	1900	2000	2000	2200
伺服电机功率 Servo motor power		KW	55	55	65	75

此设备主要用于模压木托盘、常用于单机操作，主要由三梁四柱、主缸、快速缸、顶出缸、移动工作台、工作台轨道、液压系统和电气控制系统组成。设备使用一个上模和两个下模，在一个下模放料的同时，另一个下模正在压制托盘，生产效率较高。

This equipment is mainly used for molding wooden pallets and is commonly used for single machine operation. It mainly consists of three beams and four columns, main cylinder, fast cylinder, ejector cylinder, mobile worktable, worktable track, hydraulic system, and electrical control system. The equipment uses one upper mold and two lower molds. While one lower mold is feeding, the other lower mold is pressing the tray, resulting in higher production efficiency.



平面九脚托盘液压机

FLAT NINE FOOT PALLET HYDRAULIC PRESS

技术参数 technical parameter		型号 model	ZKY32-2400	ZKY32-3000	ZKY32-3750
名称 name					
主缸公称力 Main cylinder nominal force		KN	16000	20000	25000
回程公称力 Return nominal force		KN	400	500	500
顶出力 Top output force		KN	8000	10000	12500
系统工作压力 System working pressure		Mpa	25	25	25
滑块行程 Slide stroke		mm	700	800	900
顶出行程 Ejection stroke		mm	300	350	400
最大开口高度 Maximum opening height		mm	1500	1600	1800
最小开口高度 Minimum opening height		mm	800	800	900
滑块速度 Slider speed	快速下行 Fast downlink	mm/s	180	170	170
	工作 work	mm/s	6-10	6-10	5-8
	快速回程 Fast return	mm/s	180	160	160
工作台有效面积 Effective area of workbench	左右 about	mm	1800	2100	2500
	前后 around	mm	1450	1500	1700
伺服电机功率 Servo motor power		KW	75	75	75



此设备主要用于模压平面工业托盘，由三梁四柱、主缸、快速缸、下挤出缸、液压系统和电气控制系统组成。该设备生产出的产品上表面为平面，放置产品不倾倒，当上表面成型后由大吨位下挤出缸挤压九个脚成型。该设备为公司专利产品。

This equipment is mainly used for molding flat industrial pallets, consisting of three beams and four columns, a main cylinder, a fast cylinder, a lower extrusion cylinder, a hydraulic system, and an electrical control system. The surface of the products produced by this equipment is flat and does not tilt when placed. After the upper surface is formed, it is extruded by a large tonnage lower extrusion cylinder to form nine legs. This device is a patented product of the company.

木材破碎机

WOOD CRUSHER

参数 parameter	型号 model				
		ZKMF600型	ZKMF800型	ZKMF1000型	ZKMF1200型
名称 name					
进料方式 Feeding method		自动进料	自动进料	自动进料	自动进料
进料口宽度mm Feed inlet width mm		600	800	1000	1200
进料口长度mm Length of feed inlet mm		600	600	600	600
上压辊功率kw Power of upper pressure roller kw		3	3	4	4
下压辊功率kw Lower pressure roller power kw		4	4	5.5	5.5
除铁装置 Iron removal device		自动	自动	自动	自动
主电机功率kw Main motor power kw		30	37	45	55
产量T/H Production T/H		0.8-2.0	2.0-4.0	3.0-6.0	5.0-12.0

设备性能特点

EQUIPMENT PERFORMANCE CHARACTERISTICS

- ◆ 设备出料大小可以调节；

◆ 设备配有减速机，低转速、大扭矩；

◆ 设备配有链板输送进料，进料更顺畅。
- The discharge size of the equipment can be adjusted;

The equipment is equipped with a reducer, with low speed and high torque;

The equipment is equipped with chain plate conveyor for smoother feeding.

设备应用领域

EQUIPMENT APPLICATION FIELD

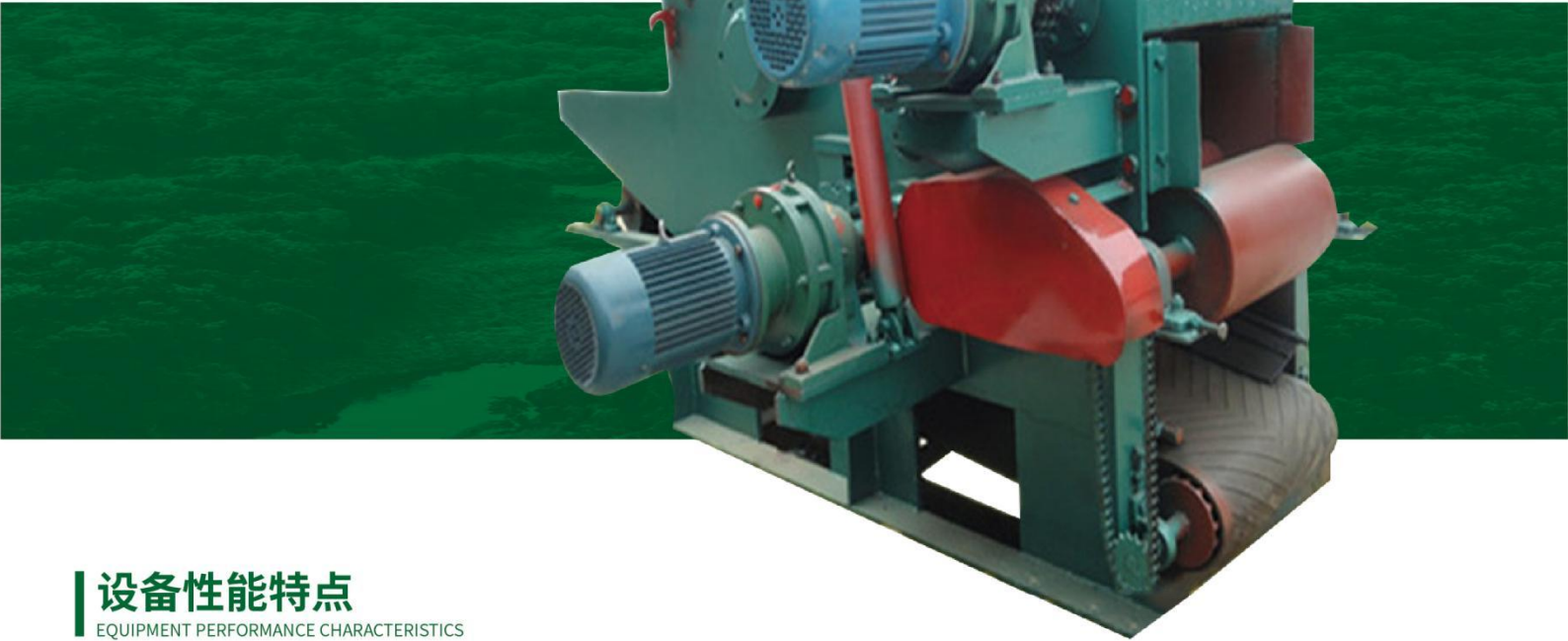
木材破碎机主要应用于木材加工粗破碎系列，可加工带钉子的木材、木托板、工地废旧木模板、木托架、树枝、木头、原木和废家具等，采用链板式输送进料，进料顺畅大幅度提高生产效率。

The wood crusher is mainly used in the rough crushing series of wood processing, which can process wood with nails, wooden pallets, construction site waste wood templates, wooden brackets, branches, wood, logs, and waste furniture. It adopts a chain plate conveyor for feeding, and the feeding is smooth, greatly improving production efficiency.



木材削片机

WOOD CHIPPER



设备性能特点

EQUIPMENT PERFORMANCE CHARACTERISTICS

- ◆ 削片机的刀片采用合金刀片，耐磨锋利、可靠耐用；

◆ 削片机易损件消耗少、运行成本低；

◆ 削片机带有除尘器，绿色环保、没有污染。
- The blades of the chipper are made of alloy blades, which are wear-resistant, sharp, reliable, and durable;

Cutting machine has low consumption of vulnerable parts and low operating costs;

The chipper is equipped with a dust collector, which is environmentally friendly and pollution-free.

设备应用领域

EQUIPMENT APPLICATION FIELD

设备主要应用于木材加工破碎系列，可将原木、枝桠材、板皮、废单板、竹材、棉杆及其他非木质纤维杆茎切削成一定规格的片料。

The equipment is mainly used in the wood processing and crushing series, which can cut logs, branches, veneer, waste veneer, bamboo, cotton stalks, and other non wood fiber stems into certain specifications of sheet materials.

参数 parameter	型号 model			
		ZKBL215型	ZKBL216型	ZKBL218型
名称 name				
刀辊直径mm Knife roller diameter mm		600	650	800
刀片数量 Number of blades		2	2	2
进料口尺寸mm Feed inlet size mm		180*400	240*540	310*680
刀辊转速r/min Knife roller speed r/min		592	590	650
加工原料最大直径mm Maximum diameter of processed raw materials mm		160	200	300
成品木片长度mm Finished wood chip length mm		35	35	35
主电机功率kw Main motor power kw		45	55	110
喂料电机功率kw Feeding motor power kw		2.2*2	3*2	4*2
产量T/H Production T/H		4-5	6-8	8-12

木材粉碎机

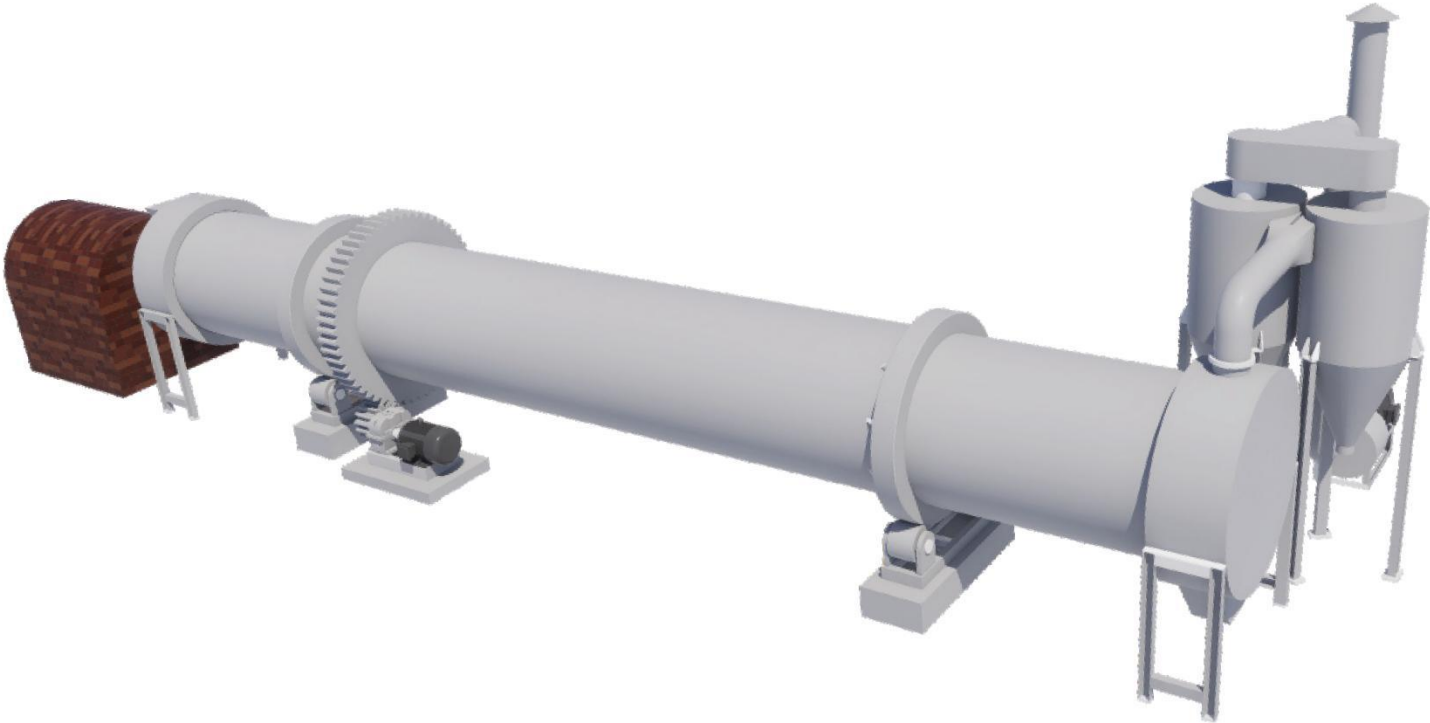
WOOD CRUSHER

参数 parameter	型号 model	ZK800型	ZK1000型	ZK1200型	ZK1500型
名称 name					
筛网宽度mm	Screen width mm	780	980	1180	1480
进料口尺寸mm	Feed inlet size mm	380*680	400*880	420*1050	450*1350
刀辊转速r/min	Knife roller speed r/min	1200	1200	2000	2600
主电机功率kw	Main motor power kw	45	55	75	55*2
产量T/H	Production T/H	1-2	2-3	3-5	5-8

木屑烘干机

SAWDUST DRYER

参数 parameter	型号 model	ZKRD-1010	ZKRD-1212	ZKRD-1512	ZKRD-1815
名称 name					
滚筒尺寸m	Drum size m	1*1	1.2*1.2	1.5*1.2	1.8*1.5
烘干机内部温度℃	Internal temperature of dryer °C	200-500	200-500	200-500	200-500
安装角度%	Installation angle%	3-5	3-5	3-5	3-5
主电机功率kw	Main motor power kw	4	5.5	7.5	11
引风机功率kw	Induced draft fan power kw	7.5	7.5	11	15
产量T/H	Production T/H	0.8-1	1-1.2	1.2-1.5	1.5-2



设备性能特点

EQUIPMENT PERFORMANCE CHARACTERISTICS

- ◆ 锤片采用锰钢加厚材质，效率高；
- ◆ 设备采用平衡技术处理，超平稳运行；
- ◆ 锰钢衬板采用一体成型工艺，精度高；
- ◆ 使用高硬度筛网，不易断，出料效果好。

The hammer blade is made of thickened manganese steel material, with high efficiency;
The equipment adopts balancing technology for ultra smooth operation;
The manganese steel lining plate adopts an integrated forming process with high accuracy;
Use a high hardness sieve, which is not easy to break and has a good discharge effect.

设备应用领域

EQUIPMENT APPLICATION FIELD

木材粉碎机是木材粉碎专用设备，将木材粉碎成适用于制作托盘的合适尺寸，产量大，适用范围广，能将木材、树枝、木片、边角料、玉米杆等物料粉碎成一定规格的木屑，作为刨花板、模压托盘等行业的原料。

Wood crusher is a specialized equipment for wood crushing, which crushes wood into suitable sizes for making pallets. It has a large output and a wide range of applications. It can crush wood, branches, wood chips, scraps, corn stalks and other materials into certain specifications of wood chips, which can be used as raw materials for industries such as particle boards and molded pallets.



设备性能特点

EQUIPMENT PERFORMANCE CHARACTERISTICS

- ◆ 干燥强度大，由于物料在气流中高度分散，物料的全部表面积均为干燥的有效面积；
- ◆ 干燥时间短；
- ◆ 气流干燥器结构简单，占地面积小，易于建造和维修；
- ◆ 处理量大，热效率高；

High drying intensity, due to the high dispersion of materials in the airflow, the total surface area of the materials is the effective drying area;
Short drying time;
The airflow dryer has a simple structure, small footprint, and is easy to build and maintain;
Large processing capacity and high thermal efficiency;

设备应用领域

EQUIPMENT APPLICATION FIELD

木屑烘干机广泛适用于秸秆压块燃料、木炭机械、木屑颗粒燃料、锯末压块、农牧业工程等行业。如玉米秸秆烘干、大豆秸秆烘干、棉花秸秆烘干、小麦秸秆烘干、高粱秆烘干、木屑烘干、刨花烘干、锯末烘干、银杏叶烘干、桑树叶烘干等农业纤维素类物料烘干。

The sawdust dryer is widely used in industries such as straw briquetting fuel, charcoal machinery, sawdust pellet fuel, sawdust briquetting, and agricultural and animal husbandry engineering. For example, drying corn stover, soybean stover, cotton stover, wheat stover, sorghum stover, sawdust, shavings, sawdust, ginkgo leaves, mulberry leaves, and other agricultural cellulose materials.

拌胶机

MIXING MACHINE

参数 parameter	型号 model	ZKBJ-300	ZKBJ-600
名称 name			
出料方式 Discharge method		气动出料	气动出料
搅拌轴转速r/minMixing shaft speed r/min		400	400
搅拌桶容积kg Mixing drum volume kg		30	30
主电机功率kw Main motor power kw		7.5	11
产量kg/h Production kg/h		300	600

设备性能特点

EQUIPMENT PERFORMANCE CHARACTERISTICS

- ◆ 生产高效，自动定量添加胶水，将胶水和原料均匀搅拌；
 - ◆ 操作简单，一键操作，生产线可以使用全自动拌胶机；
 - ◆ 运行平稳、低能耗、成品质量好；
 - ◆ 使用高强度钢板制作，使用寿命长；
- Efficient production, automatic quantitative addition of glue, evenly mixing of glue and raw materials;

Easy to operate, one click operation, the production line can use a fully automatic glue mixer;

Smooth operation, low energy consumption, and good product quality;

Made of high-strength steel plates, with a long service life;

设备应用领域

EQUIPMENT APPLICATION FIELD

筒式拌胶机采用立式结构，主要用于模压托盘生产线，是将刨花、木屑和胶水均匀混合的机器。将原料放入拌胶机，加入胶水后一键启动将物料搅拌均匀，然后打开卸料口，搅拌后的成品自动卸出。

The drum mixer adopts a vertical structure and is mainly used for molding tray production lines. It is a machine that evenly mixes wood chips, wood chips, and glue. Put the raw materials into the glue mixer, add glue, and start with one click to mix the materials evenly. Then open the discharge port, and the stirred finished product will be automatically discharged.



塑料挤出机

PLASTIC EXTRUDER

参数 parameter	型号 model	ZK-LJ180
名称 name		
杆径比		33:1
螺杆直径mm		180
筒体长度mm		5940
主电机功率kw		110
主机调速装置		75kw变频器



设备性能特点

EQUIPMENT PERFORMANCE CHARACTERISTICS

- ◆ 螺杆采用高强度耐腐蚀合金钢制作而成，坚固耐用；
 - ◆ 温度控制采用智能温控仪表，多区加热多区冷却，确保加工温度的精确；
 - ◆ 齿轮采用优质材料，全部渗碳淬火处理，保障齿轮强度；
 - ◆ 设备运行平稳，振动小，噪音低；
 - ◆ 采用齿轮油泵组，供油稳定，噪音低。
- The screw is made of high-strength corrosion-resistant alloy steel, which is sturdy and durable;

Temperature control adopts intelligent temperature control instruments, with multi zone heating and multi zone cooling to ensure accurate processing temperature;

The gears are made of high-quality materials and are fully carburized and quenched to ensure their strength;

The equipment operates smoothly, with low vibration and low noise;

Adopting a gear oil pump group, stable oil supply and low noise.

设备应用领域

EQUIPMENT APPLICATION FIELD

塑料挤出机是一种将塑料原料熔解并挤出的塑料挤出设备，通过加热、加压而使物料以流动状态连续挤出，具有效率高、单位成本低的优点，是生产模压塑料托盘生产线中的必要设备。

本款塑料挤出机是单螺杆塑料挤出机，其配备有喂料系统、高扭减速箱、润滑系统、挤出系统、加热系统及自控系统，具有运行稳定、效率高、便于清洗维修等特点。

A plastic extruder is a plastic extrusion equipment that melts and extrudes plastic raw materials. It continuously extrudes materials in a flowing state through heating and pressure, and has the advantages of high efficiency and low unit cost. It is a necessary equipment in the production line of molded plastic pallets.

This plastic extruder is a single screw plastic extruder equipped with a feeding system, high torque gearbox, lubrication system, extrusion system, heating system, and automatic control system. It has the characteristics of stable operation, high efficiency, and easy cleaning and maintenance.

高精度八面导轨伺服液压机
HIGH PRECISION EIGHT SIDED GUIDE RAIL SERVO HYDRAULIC PRESS

技术参数 technical parameter		型号 model	ZKM-250K	ZKM-315K	ZKM-400K	ZKM-500K	ZKM-630K	ZKM-800K
名称 name								
主缸公称力 Main cylinder nominal force		KN	2500	3150	4000	5000	6300	8000
回程公称力 Return nominal force		KN	200	240	320	400	500	600
顶出力 Top output force		KN	500	630	630	1000	1000	1200
系统工作压力 System working pressure		MPa	25	25	25	25	25	25
滑块行程 Slide stroke		mm	500	500	600	700	700	800
顶出行程 Ejection stroke		mm	150	200	200	250	250	300
最大开口高度 Maximum opening height		mm	800	800	1000	1100	1100	1300
最小开口高度 Minimum opening height		mm	300	300	400	400	400	500
滑块速度 Slider speed	快速下行 Fast downlink	mm/s	280	280	260	260	240	240
	工作 work	mm/s	10-25	9-22	8-20	10-22	10-22	8-20
	快速回程 Fast return	mm/s	240	240	230	230	220	220
顶出速度 Ejection speed	上升 rise	mm/s	100	95	95	85	85	100
	下降 decline	mm/s	150	140	140	130	130	140
工作台有效面积 Effective area of workbench	左右 about	mm	1000	1000	1100	1200	1250	1300
	前后 around	mm	800	850	900	1000	1100	1300
伺服电机功率 Servo motor power		KW	25.4	30	35	45	45	55



设备性能特点

EQUIPMENT PERFORMANCE CHARACTERISTICS

- ◆ 采用伺服控制系统：
a.节能25%-55%； b.噪音小于80分贝； c.温升小于25℃；
- ◆ 液压站装在设备顶部、电器箱固定在设备右侧，整体运输，方便安装；
- ◆ 四角八面导轨，导向精度高，抗偏载能力强，采用电磁泵集中润滑；
- ◆ 液压系统采用插装阀集成系统，动作可靠，使用寿命长，液压冲击小；
- ◆ 滑块的工作压力、速度、行程范围均可根据工艺需要进行调整。

Adopting a servo control system
a. Energy saving 25% -55%; b. Noise less than 80 decibels; c. The temperature rise is less than 25 °C;
The hydraulic station is installed on the top of the equipment, and the electrical box is fixed on the right side of the equipment for overall transportation and convenient installation;
Four corner eight sided guide rail, with high guiding accuracy and strong anti bias load capacity, using electromagnetic pump centralized lubrication;
The hydraulic system adopts a plug-in valve integrated system, which has reliable operation, long service life, and small hydraulic impact;
The working pressure, speed, and stroke range of the slider can be adjusted according to process requirements.

设备应用领域

EQUIPMENT APPLICATION FIELD

高精度伺服液压机主要应用于汽车制造、航空航天、电子电器、塑料制品、橡胶制品、五金工具、粉末冶金等领域，特别适用于精密成型零件。具有精度高、响应快、节能环保等优点。

High precision servo hydraulic presses are mainly used in the fields of automotive manufacturing, aerospace, electronics, plastic products, rubber products, hardware tools, powder metallurgy, etc., especially suitable for precision formed parts. It has the advantages of high accuracy, fast response, energy conservation and environmental protection.

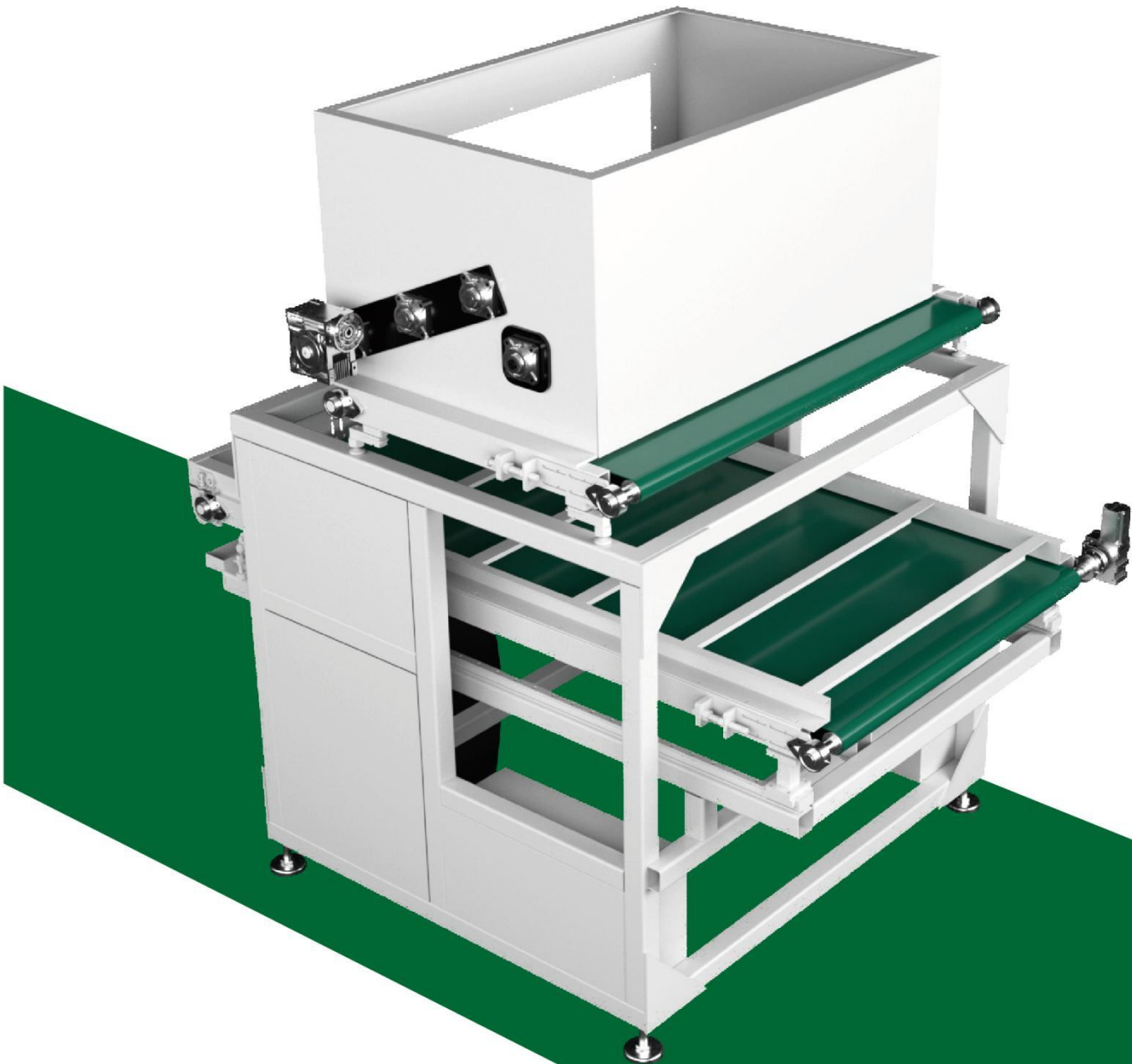
木屑自动铺平机
WOOD CHIP AUTOMATIC LEVELING MACHINE

设备应用领域

EQUIPMENT APPLICATION FIELD

木屑自动铺平机主要应用于模压托盘自动化生产线，可将搅拌好的物料自动输送到模压模具中并自动铺平。设备可以自动喷脱模剂、定量给料，把物料输送至模具内均匀铺平，然后自动退出模具压机开始工作。此设备可以调整送料宽度适用于不同模具，可以节省大量铺料时间，提升工作效率，降低人工成本，压制出的产品质量更加稳定。

The sawdust automatic leveling machine is mainly used in the automated production line of molded trays, which can automatically transport the mixed materials to the molding mold and level them automatically. The equipment can automatically spray release agent, feed in a fixed amount, transport the material evenly and evenly into the mold, and then automatically exit the mold press to start working. This device can adjust the feeding width to suit different molds, saving a lot of laying time, improving work efficiency, reducing labor costs, and producing products with more stable quality.



YZ71系列复合材料成型液压机

YZ71 SERIES COMPOSITE MATERIAL FORMING HYDRAULIC PRESS

SMC复合材料成型液压机是一种用于SMC(SheetMoldingCompound，片状模塑料)复合材料成型的设备。这种设备具有一系列的性能特点和设备参数，以满足SMC复合材料成型的需求。

SMC composite material forming hydraulic press is a device used for forming SMC (Sheet Molding Compound) composite materials. This device has a series of performance characteristics and equipment parameters to meet the needs of SMC composite material forming.

设备性能特点

EQUIPMENT PERFORMANCE CHARACTERISTICS

- ◆ 设备可使用框架式或四柱式结构；
- ◆ 框架式结构刚性好，稳定性高，抗偏载能力强，调整后不易发生精度跑偏的现象；
- ◆ 四柱式结构立柱导向，可调性强，性价比高；
- ◆ 速度快，震动小。

The device can use a frame or four column structure;
The frame structure has good rigidity, high stability, strong resistance to eccentric loads, and is less prone to precision deviation after adjustment;
Four column structure with column guidance, strong adjustability, and high cost-effectiveness;
Fast speed, minimal vibration.

设备应用领域

EQUIPMENT APPLICATION FIELD

SMC复合材料成型液压机主要适用于SMC材料模压成型，精度高的产品推荐使用框架式结构。
SMC液压机也可用于汽车(保险杠、底护板成型等)、航空、轨道交通(铁路车柄高铁动车内饰)等行业及家居、电力、卫浴，环保等行业。

SMC composite material forming hydraulic press is mainly suitable for SMC material molding, and frame structure is recommended for high-precision products.
SMC hydraulic press can also be used in industries such as automobiles (bumper, bottom cover forming, etc.), aviation, rail transit (railway handle, high-speed rail interior), as well as home, power, bathroom, environmental protection, etc.

可选附件

OPTIONAL ACCESSORIES

- | | |
|----------|---------------------------------|
| 伺服系统 | servo system |
| 片材切割机 | Sheet cutting machine |
| 手动换模小车 | Manual mold changing trolley |
| 电动换模小车 | Electric mold changing car |
| 机器人、自动化 | Robots, automation |
| 模具温控系统 | Mold temperature control system |
| 吹气、抽真空系统 | Blowing and vacuuming system |



技术参数 Technical Parameter		型号 model	315T	500T	800T	1200T	2000T	2500T
名称 name								
加压能力 Pressure capacity		KN	3150	5000	8000	12000	20000	25000
开模力 Mold opening force		KN	453	580	1200	2000	3200	4000
开模高度 Mold opening height		mm	1200	1400	2000	2400	3000	3000
滑块行程 Slide stroke		mm	800	1000	1400	1800	2200	2200
滑块速度 Slider speed	快速下行 Quickly descending	mm/s	200	200	300	300	400	400
	慢下速度 Slow down the speed	mm/s	15-20	15-20	15-20	15-20	15-20	15-20
	压制速度 Suppression speed	mm/s	0.5-5	0.5-5	0.5-5	0.5-5	0.5-5	0.5-5
	快速开模 Quick mold opening	mm/s	1-5	1-5	1-5	1-5	1-5	1-5
	快速回程 Fast return journey	mm/s	160	175	200	200	200	200
工作台有效面积 workbenches Effective area	左右 about	mm	1800	1800	2400	3800	3800	3800
	前后 before and after	mm	1400	1400	1800	2000	2000	2400
总功率（约） Total power (approximately)		KN	20	30	36	70	105	130

Y32系列玻璃钢产品液压机

Y32 SERIES FIBERGLASS HYDRAULIC PRESS

技术参数 technical parameter		型号 model	ZKY32 -100	ZKY32 -160	ZKY32 -200	ZKY32 -315	ZKY32 -500	ZKY32 -630	ZKY32 -800	ZKY32 -1000	ZKY32 -1250
名称 name											
主缸公称力 Main cylinder nominal force		KN	1000	1600	2000	3150	5000	6300	8000	10000	12500
顶出力 Top output force		KN	190	240	400	630	1000	1000	1600	2000	2000
系统工作压力 System working pressure		MPa	25	25	25	25	25	25	25	25	25
滑块行程 Slide stroke		mm	600	700	700	800	900	900	900	900	900
顶出行程 Ejection stroke		mm	200	200	250	300	350	350	400	400	400
最大开口高度 Maximum opening height		mm	900	1000	1100	1250	1500	1600	1600	1600	1600
最小开口高度 Minimum opening height		mm	300	300	400	450	600	700	700	700	700
滑块 速度 Slider speed	快速下行 Fast downlink	mm/s	100	100	100	110	110	110	110	110	110
	工作 work	mm/s	14	12	15	12	13	12	12	10	10
	快速回程 Fast return	mm/s	120	120	120	130	130	130	130	130	120
工作台 有效面积 Effective area of workbench	左右 about	mm	720	750	950	1250	1400	1500	1500	1600	1700
	前后 around	mm	580	640	900	1200	1400	1500	1500	1600	1600
伺服电机功率 Servo motor power		KW	7.5	11	18.5	22	37	44	60	74	90

设备性能特点

EQUIPMENT PERFORMANCE CHARACTERISTICS

- ◆ 采用伺服控制系统
a.节能25%-55%； b.噪音小于80分贝； c.温升小于25℃；
- ◆ 设备采用三梁四柱式结构，主结构采用有限元分析优化设计，简单、经济、实用；
- ◆ 液压系统采用插装阀集成系统，动作可靠，使用寿命长，液压冲击小；
- ◆ 采用独立的电气控制系统，工作可靠，维修方便；
- ◆ 设备按钮集中控制，具有调整、半自动两种操作方式；
- ◆ 可实现定程和定压两种成型工艺，并具有保压延时等功能；
- ◆ 滑块的工作压力、速度、行程范围均可根据工艺需要进行调整。

Adopting servo control system:
a. Energy saving of 25% -55%;
b. Noise less than 80 decibels;
c. The temperature rise is less than 25 °C;
The equipment adopts a three beam and four column structure, and the main structure adopts finite element analysis optimization design, which is simple, economical, and practical;
The hydraulic system adopts a plug-in valve integrated system, which has reliable operation, long service life, and small hydraulic impact;
Adopting an independent electrical control system, reliable operation and convenient maintenance;
Centralized control of device buttons, with two operating modes: adjustment and semi-automatic;
It can achieve two types of forming processes: fixed stroke and fixed pressure, and has functions such as pressure holding delay;
The working pressure, speed, and stroke range of the slider can be adjusted according to process requirements.

设备应用领域

EQUIPMENT APPLICATION FIELD

主要适用于金属材料的拉伸、弯曲、翻边、校正、压装及冷、热挤压、冲裁等各种冲压或压制工艺，还适应于粉末制品、磨料制品、复合材料、绝缘材料等非金属材料的压制成型工艺。

Mainly suitable for various stamping or pressing processes of metal materials such as stretching, bending, flanging, correction, pressing, cold and hot extrusion, punching, etc. It is also suitable for the pressing and forming process of non-metallic materials such as powder products, abrasive products, composite materials, insulation materials, etc.

